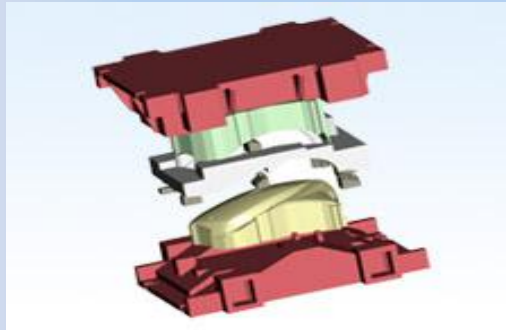




Profile Overview

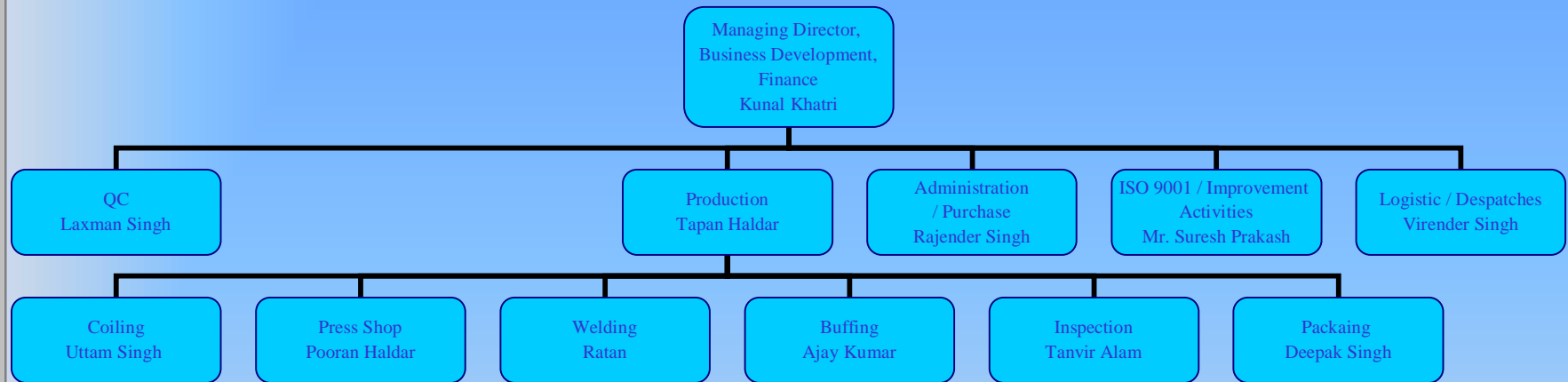


Wintage Group





Organisation Structure



Wintage Group



Name

Wintage Engineers &
Consultants

Business Profile

Wire Forming, Stamping Facility,
Consultancy / Export Trading
Arm of Group Companies*

* All the export sales of our group companies are being done by Wintage Engineers & Consultants



Quality Certification



Wintage Group



Certificate of Registration

This certificate has been awarded to

Wintage Engineers & Consultants
Plot No. 40 A/13, Site-IV, Industrial Area, Sahibabad, Ghaziabad, U.P., 201
010, India

in recognition of the organization's Quality System which
complies with

ISO 9001:2008

The scope of activities covered by this certificate is defined below

**Manufacture of Automotive & Engineering Metal
Components**

Certificate Number:	34500/A/0001/UK/En	
Date of Issue: (Original Certificate)	09 April 2009	
Date of Issue:	09 April 2009	Issue No: 1
Expiry Date:	08 April 2012	
Issued by:		

On behalf of the
Schemes Manager

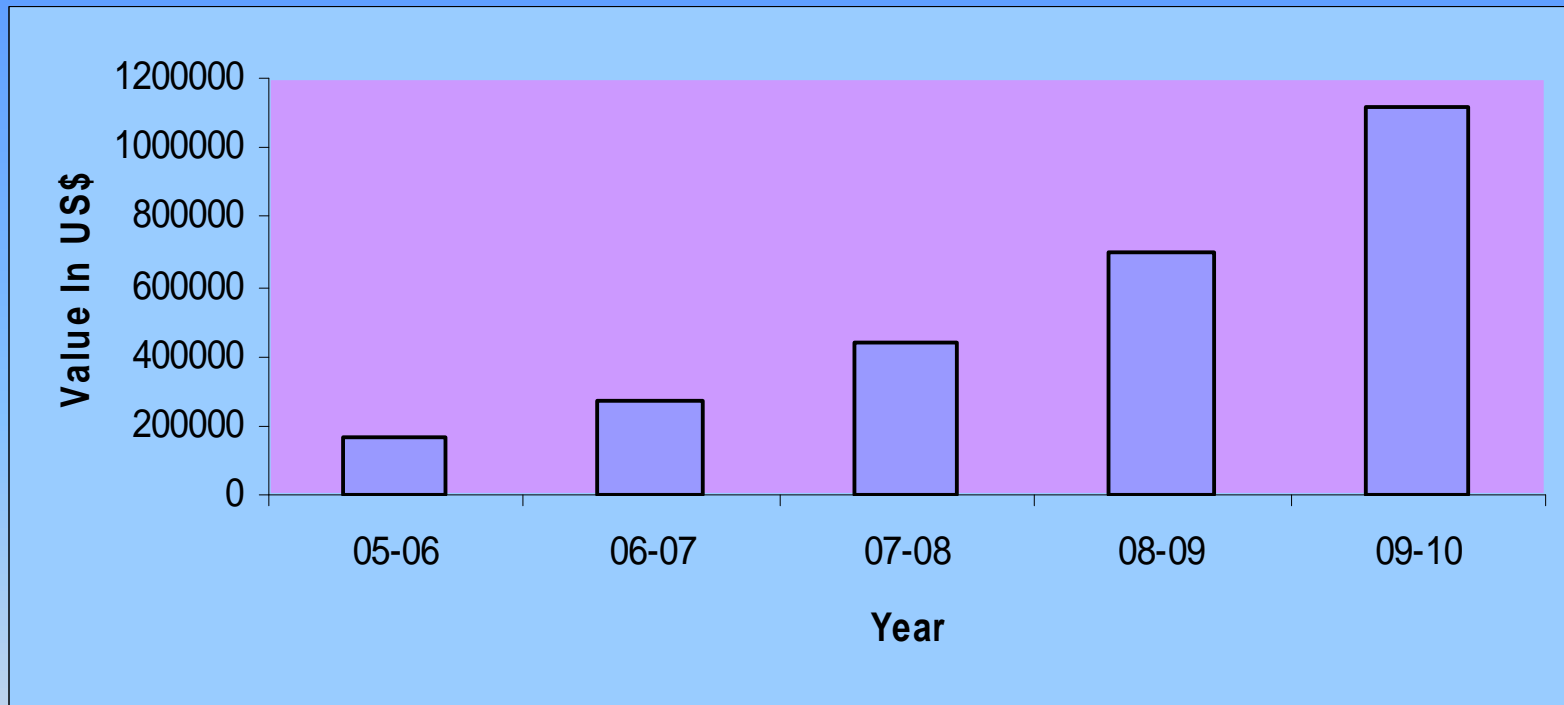
If there is any doubt as to the authenticity of this certificate,
please do not hesitate to contact the Head Office of the Group or info@ros-pro.com
urs is a member of Registrar & Consultants (Holdings) Limited a UK registered company, Cheddar, Somerset



Cert 4U Iss 0408



Our Sales Growth

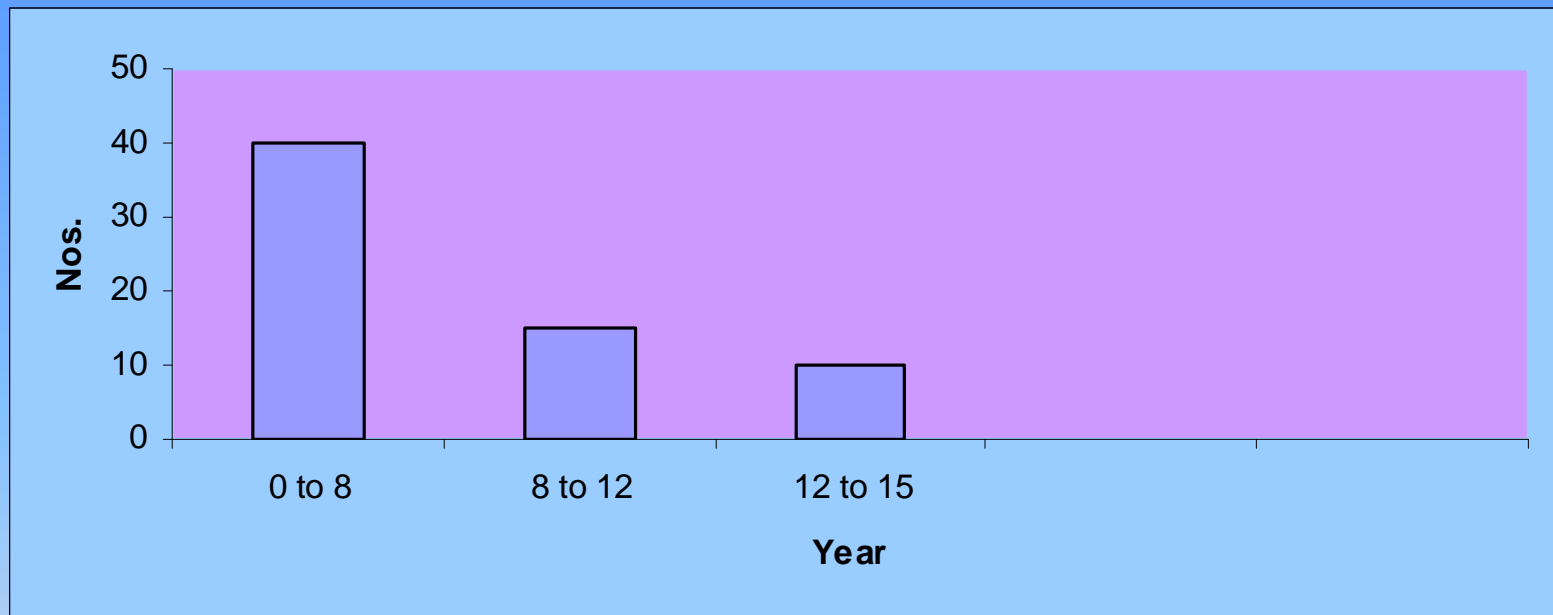


Wintage Group

Precision is our profession, Quality the result



Man Power Strength





- Incorporated in 2005.
- Possess a wealth of metal stamping, Wire Forming experience
- State-of-the-art metal stamping system, Wire Forming and the most suitable machine tools
- Highly skilled, dedicated, experienced work force
- Die design, Die manufacturing, and Precision stamping processes

Precision is our profession, Quality the result



Vision.

- To become a leading global supplier of Precision metal stampings & Wire Forming.
- To be recognized as one of the best places to work and most respected companies.

Philosophy

- Customer Focused
- Employee driven
- Data based and
- Teamwork and Innovation.



Product Capabilities



Wintage Group



Stampings for Automotive, Laminations, Electronic, Telecommunication and Computer applications.



Precision complex metal stamping, sub-assemblies, mechanisms and systems.



Fine-blanked components for Automotive, Household appliances, Electrical, Watch and Clock, Measuring equipment etc



Cost-effective precision services



- Specialized in-house capability from Engineering design to Tooling and Metal Stamping.
- Small to large, simple to complex, and quantities ranging from one to millions.
- Reengineering of an existing stamped part.
- We create subassemblies from our stampings and parts from your other suppliers
- Validation : testing to the extremes of every material, component, subassembly with utmost speed and precision.

Wintage Group

Engineering experience and expertise to deliver every time all the time.



- Product Design and Development
- Tool Design & Manufacturing
- Stamping Technologies
- Manufacturing Engineering
- Testing & Validation
- Cost Competitiveness
- Productivity enhancement tools

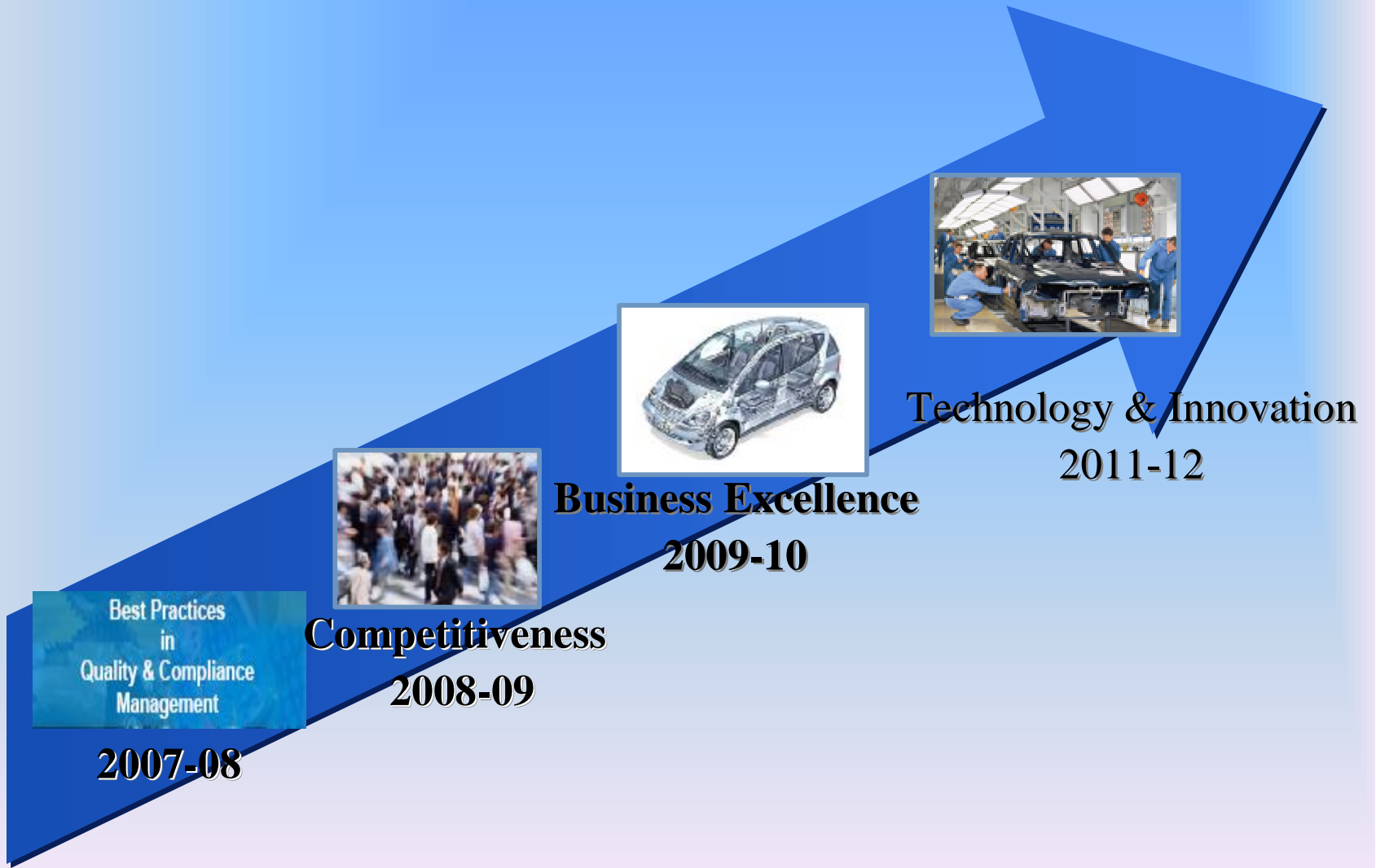
Enhancing our customers business



Strategy For Growth



Wintage Group





Our Resources



üConventional, High Speed and Fine blanking
(10 Tons to 100 Tons, 40 SPM to 400 SPM)

üEngineering Design Services



Design Center



Press Shop

In-house Facilities



Tool Room

üTool Maintenance



**Metrology Lab
(2009-10)**

üMeasurements, Calibration and Validation

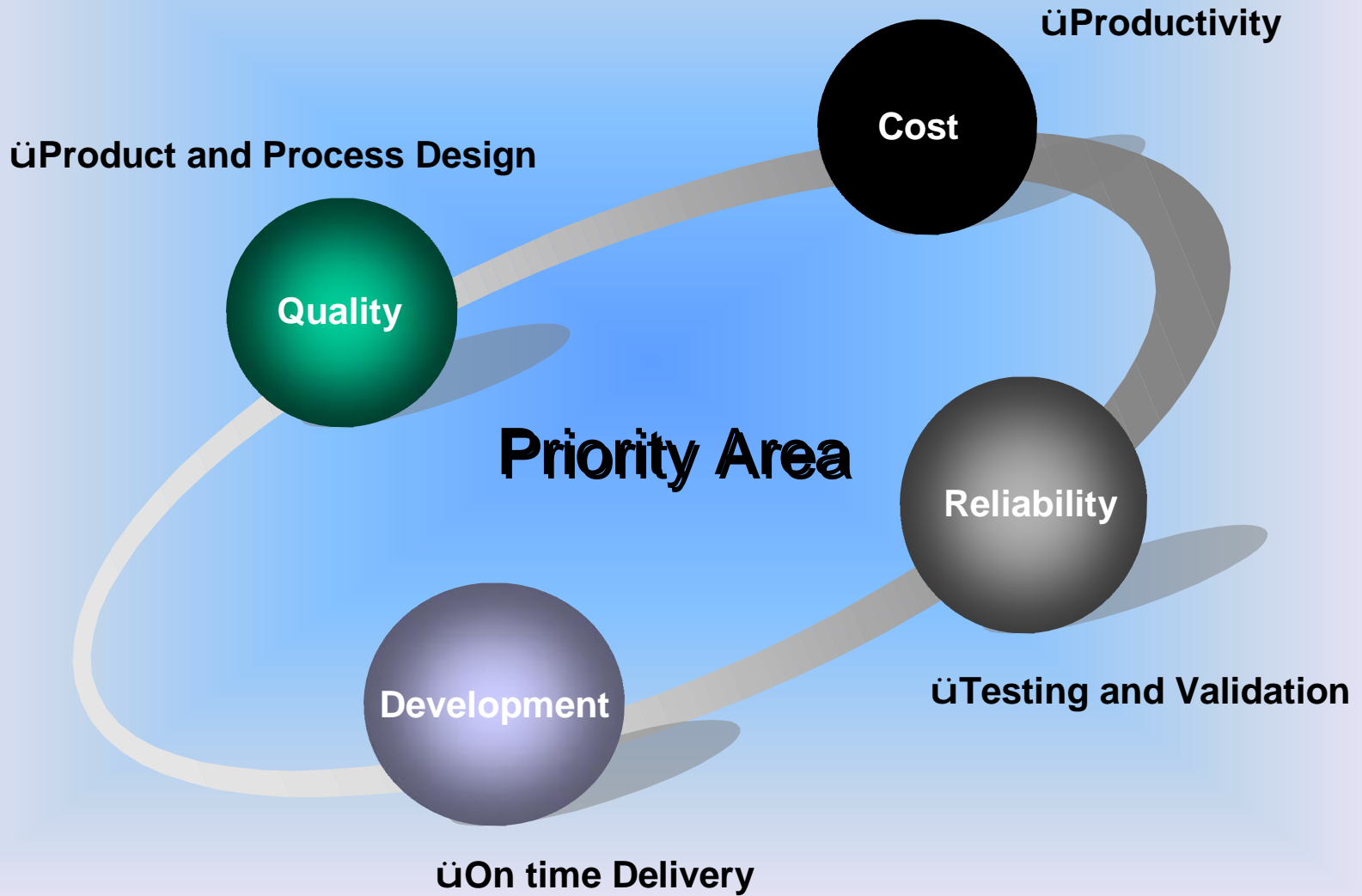
Wintage Group



Our Strength



Wintage Group





WINTAGE EMPLOYEE CHARTER

Clever Tech is committed to an operating philosophy which is based on fairness and concern for people. This philosophy is part of Clever Tech's fair enterprise culture in which employees and management share in the responsibility to ensure the success of the company.

JOB SECURITY

Being competitive by making a better product for a better price is the best way to enhance job security. Clever Tech is committed to working together with employees to help protect their job security.

A SAFE AND HEALTHFUL WORKPLACE

Clever Tech strives to provide employees with a working environment which is safe and healthful

FAIR TREATMENT

Clever Tech offers equal opportunities based on an individual's qualification and performance free from discrimination or favoritism

COMPETITIVE WAGES AND BENEFITS

If your total compensation is found not to be competitive, then your wages will be adjusted.

EMPLOYEE PROFIT PARTICIPATION

Clever Tech believes that every employee should share in the financial success of the company

COMMUNICATION AND INFORMATION

Through regular meetings and publications Clever Tech will provide employees with information so that they will know what is going on in their company and within the industry.



Serving with Pride



Looking for improvement in your stamping products ?
Try Wintage Group.
Experience the difference ...speed, quality and value.

Wintage Group

Committed to build a winning brand
..trust and assurance for customers.

Let's get on track, building together for the future market



Fine Blanked Components ..



Wintage Group





Assemblies ...



Wintage Group





High Speed Precise Stamping ...



Wintage Group





Mixed Product Range ...



Wintage Group

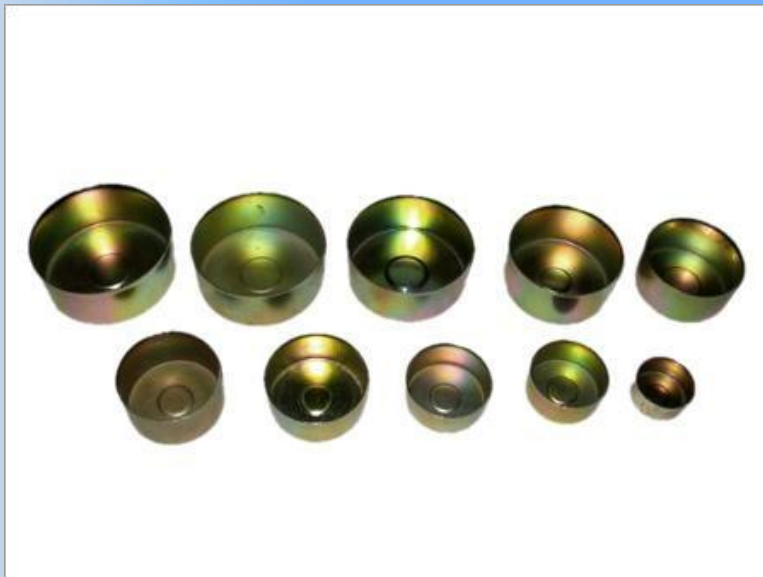




Deep Drawn Parts ...



Wintage Group





Mixed Product Range ...



Wintage Group





Mixed Product Range ...



Wintage Group



Our Customers



Wintage Group

OEM	Customer	Product
Domestic		
	Century	Automotive/Two Wheeler
	Sevion	Industrial
	JNS Instruments	Automotive/Four Wheeler
	Jay Ushin	Automotive/Two Wheeler
	Joezer Systems	Automotive/Three Wheeler
	ASK Automotive	Automotive/Two wheeler
	Minda Valeo	Automotive/Two wheeler
Overseas		
	CKD Pack Canada & Australia	Automotive Packaging
	Accessory Arcade	Industrial Components
	Lincoln USA	Industrial Components



Equipments



Wintage Group

Process / Dept	Equipment	Make
Design	CAD Station – 3 Nos.	Auto-Cad, Solid-works, Pro-E, UG
Tool Room	Tool Room Lathe -Pilot 170	PMW - Gujarat
	Surface Grinder -V5	Brown and Sharpe -USA
	Surface Grinder	Ramana
	Milling Machine -M2V	Oerli Italianakon -Italy
	Cylindrical Grinder	under process
Production	Hydraulic Press (6T)	Local
	High Speed Press (10 Tons, 400 SPM)	ESSA - Switzerland
	Mechanical Power Press (20 Tons)	Lakshmi Udyog
	Mechanical Power Press (30 Tons)	Lakshmi Udyog
	High Speed Press (63 Tons, 200 SPM)	Ameteeep M/C Tools
	Power Press (100 Tons)	Ameteeep M/C Tools
	MIG Welding Machine (2 Nos.)	ESAB
Quality Assurance (By 2008-09)	Multispindle Tapping Machine	Machless
	Profile Projector	opticom vl 360
	Video Measuring System	opticom model 250
	Stereo Microscope with measuring Software	mias
	Metallurgical Microscope with Image Analyser	mias version 20
Utility	Hardness Tester	phynix Germany
	Generator 50 KVA	Kirloskar Cummins
	Compressor 125 CFM	Atlas Copco
	Electrical Panel	Shivam Instruments



Wintage Engineers & Consultants

India's biggest Stainless Steel Turbo Charger Hoses
Reinforcement Rings Manufacturer

Wintage Group



Rings For Hoses



Wintage Group





Equipments



Wintage Group

Description	Capacity	Nos.
Power Press	20 Ton	1
Tig Welding	400 Amp	2
Tig Welding	200 Amp	2
Sizing Machine	10 Ton	3
Lathe Machine		1
Surface Grinder		1
Drilling Machine		1
Buffing Machines		5
Other Measuring Equipments		



Our Customers



Wintage Group



SANITARYWARE | BATH FITTINGS | KITCHEN SINKS
SHOWER TEMPLES | WHIRLPOOL





Contact Us...



Wintage Engineers & Consultants

1591, DDA Flats , GTB Enclave,
Delhi – 110 093, India

Plant:

Plot No. 40A/13, Site – IV, Industrial Area, Sahibabad,
Ghaziabad, UP-201010, India

Telephone : +91 120 4563943, Fax : +91 120
4563944

Email : info@wintageengineers.com

Wintage Group



Way Forward...



Thank You.

Wintage Group

